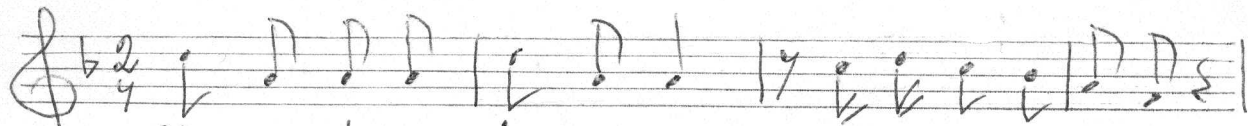
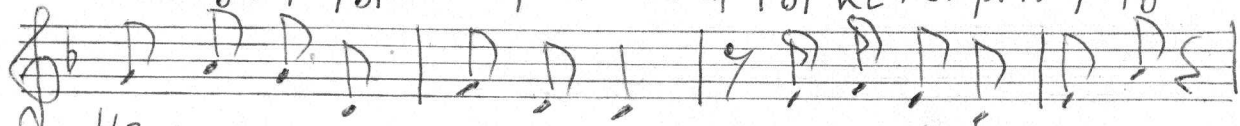


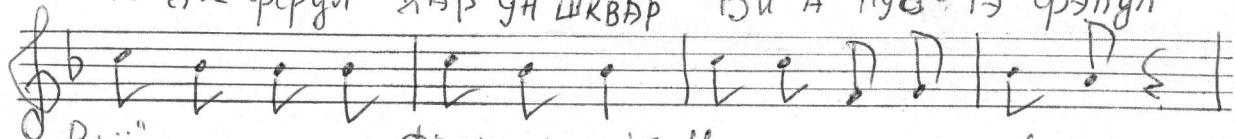
Ундзер фурман.



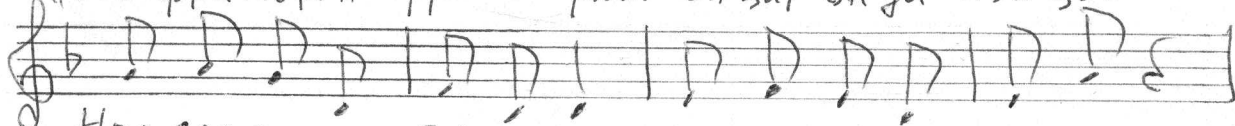
Ундзер фурман Фроим Шкляр Гот ке хойфта Фэрдги



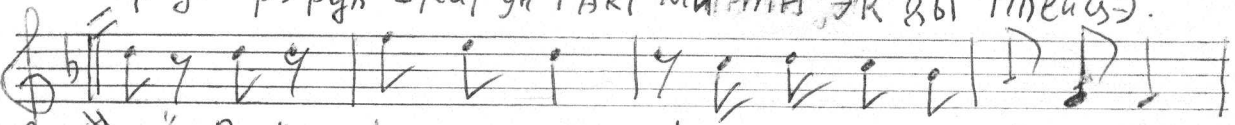
Из вас фэрдги дар ун шквар Ви а пус-тэ фэлдл



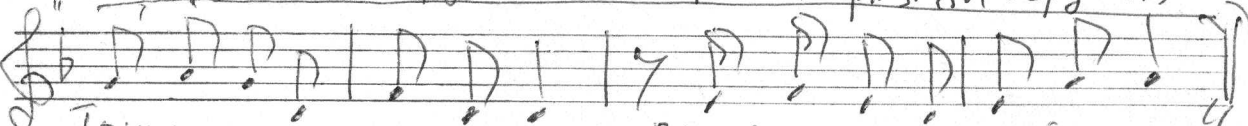
"Вьо" фриморгн фроим шрайт Ун цит онгы лэй цэс



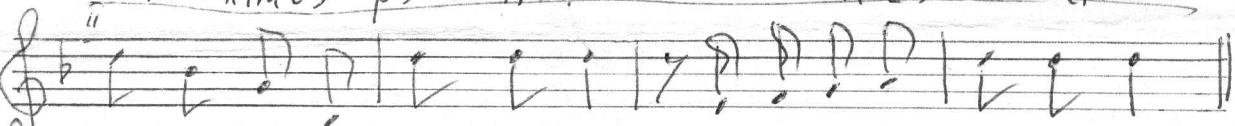
Нор дос фэрдл штей ун гакт минтн эх вы плейцэ.



"Вьо" "Вьо" фэрдэ лэ Фро им краці вы бердэ лэ



Танцмайн либэ фэйзе лэ Ви а юн зэ мэйдэ лэ



Танцмайн либэ фэйзе лэ Ви а юн зэ мэйдэ лэ

Handwritten musical score consisting of three staves. The first staff is in treble clef with a key signature of one flat and a 2/4 time signature. It contains 10 measures of music with various note values and rests. The second staff is also in treble clef with the same key signature and time signature, containing 10 measures of music. The third staff is in bass clef with the same key signature and time signature, containing 10 measures of music. Chord symbols are written below the notes in each staff. The word "Endin" is written at the end of the first staff, and "36" is written at the end of the third staff.

Staff 1 (Treble Clef):
Measure 1: *gm C7 F*
Measure 2: *gm A7 Dm*
Measure 3: *Dm*
Measure 4: *gm F C7 F*
Measure 5: *gm*
Measure 6: *Endin*

Staff 2 (Treble Clef):
Measure 1: *A7 Dm*
Measure 2: *Gm*
Measure 3: *A7*
Measure 4: *F*
Measure 5: *gm*
Measure 6: *A7*
Measure 7: *gm*
Measure 8: *A7*
Measure 9: *A7*
Measure 10: *Dm*

Staff 3 (Bass Clef):
Measure 1: *A7 Dm Gm*
Measure 2: *C7 F*
Measure 3: *Gm*
Measure 4: *A7*
Measure 5: *F*
Measure 6: *gm*
Measure 7: *A7*
Measure 8: *A7*
Measure 9: *A7*
Measure 10: *A7*